

2025

CAMRY E HYBRID



2025 TOYOTA CAMRY E HYBRID 2.5L PETROL 5 SEAT AT



**LED
HEADLAMPS**

LED FOG LAMPS



2025 TOYOTA CAMRY E HYBRID 2.5L PETROL 5 SEAT AT

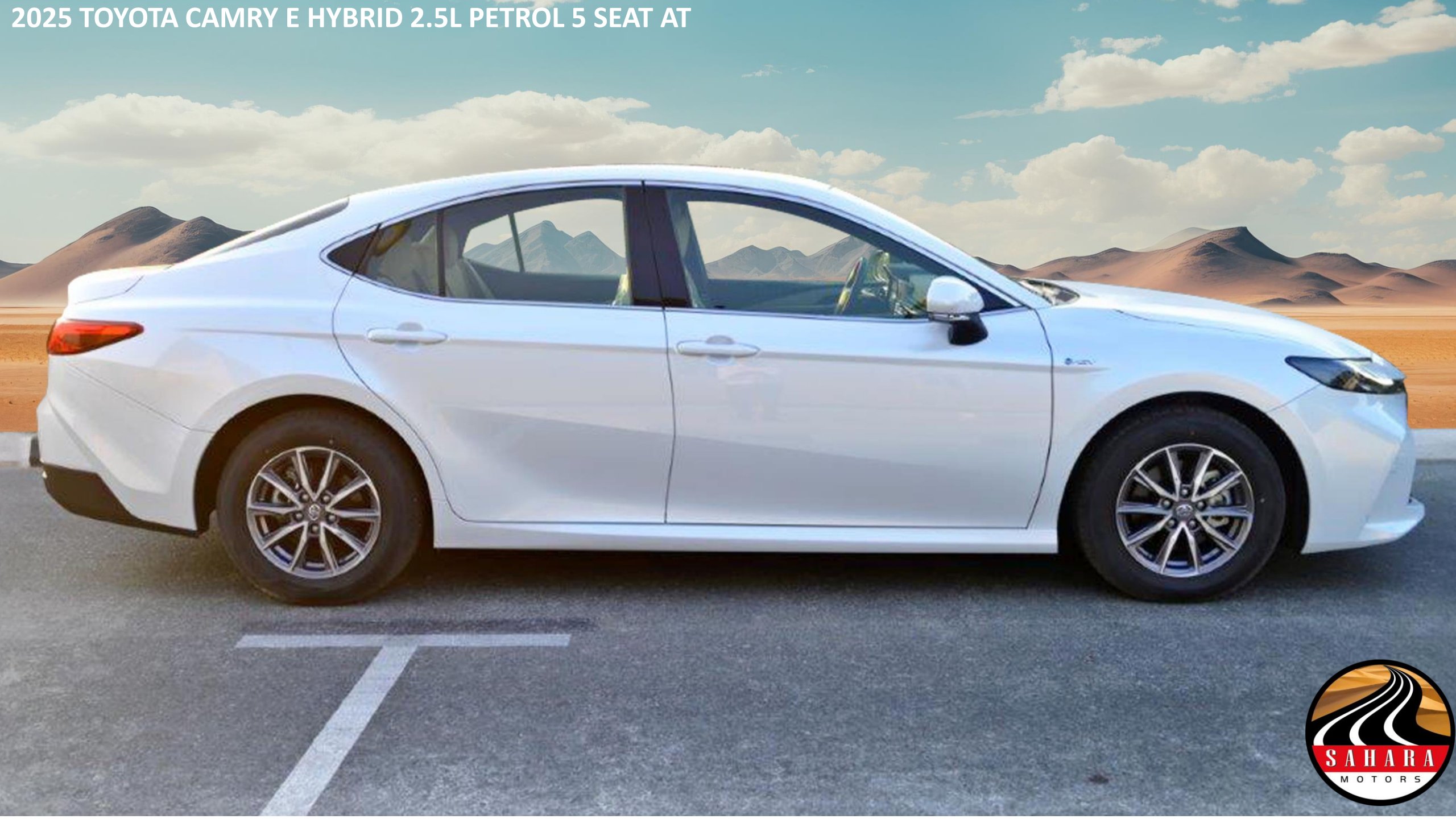


**POWER MIRRORS
WITH INDICATORS**

18" ALLOY WHEELS



2025 TOYOTA CAMRY E HYBRID 2.5L PETROL 5 SEAT AT



2025 TOYOTA CAMRY E HYBRID 2.5L PETROL 5 SEAT AT

LED TAIL LAMP





**TILT TELESCOPIC
STEERING WHEEL**

FABRIC SEATS

**POWER ADJUSTABLE SEATS
WITH LUMBAR SUPPORT**





**ARM REST WITH
CUP HOLDERS**

REAR AC DUCT



OPTITRON METER



7" DISPLAY AUDIO WITH APPLE CARPLAY



POWER STEERING WHEEL WITH CONTROLLING SWITCHES

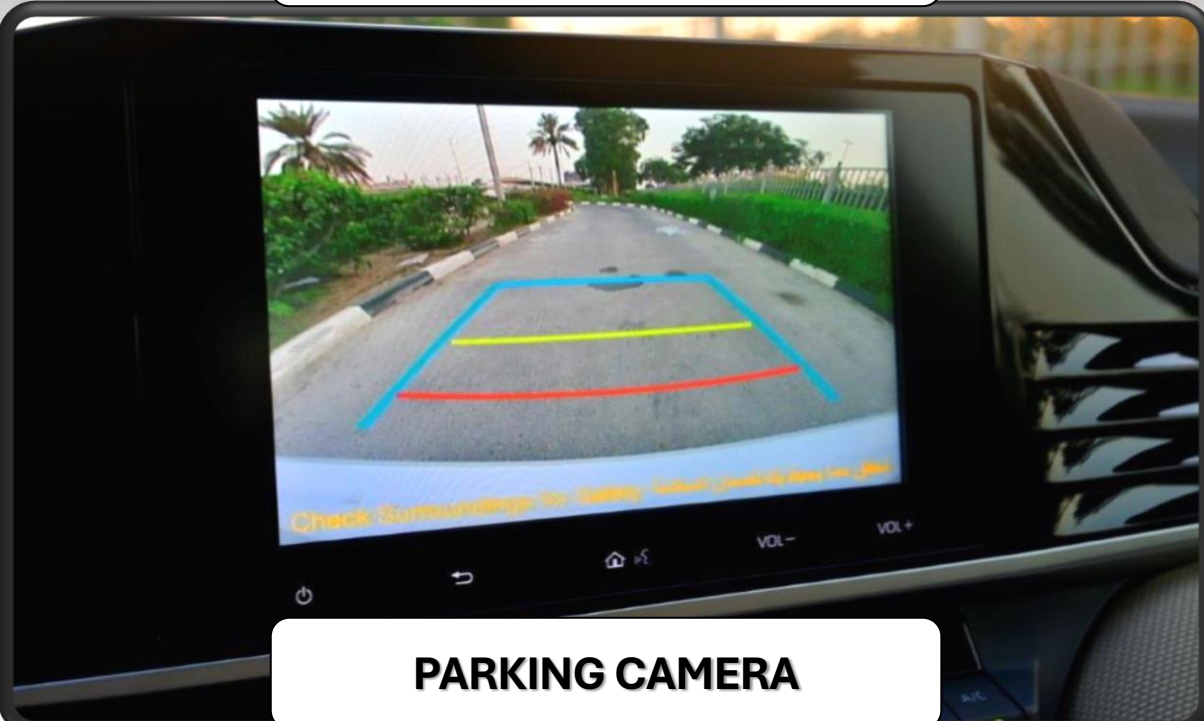




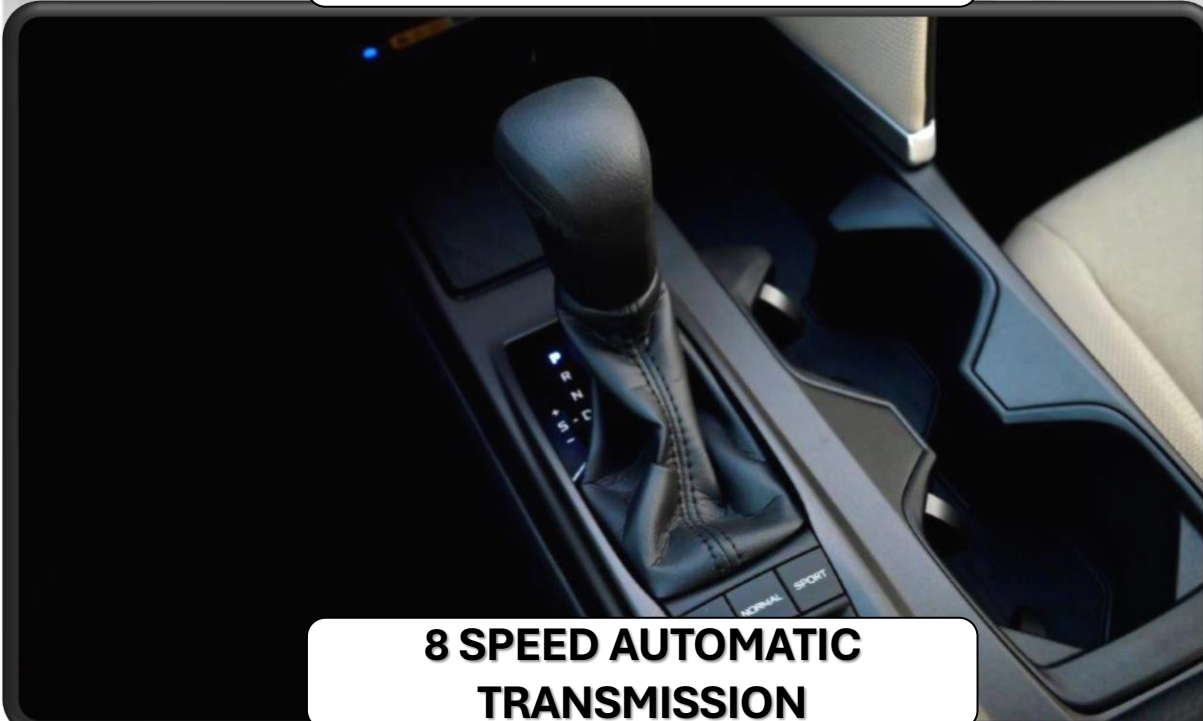
POWER STEERING WHEEL



WIRELESS CHARGING PORT



PARKING CAMERA



8 SPEED AUTOMATIC TRANSMISSION

2025 MODEL TOYOTA CAMRY E HYBRID 2.5L PETROL 5 SEAT AUTOMATIC TRANSMISSION

TECHNICAL FEATURES

ENGINE: 2.5L, 4-CYLINDERS

MAX OUTPUT: 201 HP / 6600 RPM

MAX TORQUE: 240 NM /4,000 - 5,000 RPM

8-SPEED AUTOMATIC TRANSMISSION

TIRES SIZE: 205/65R16

DIMENSIONS L - W - H (MM): 4920 - 1840 - 1445

FUEL EFFICIENCY: 17.2 KM/L

FUEL TANK CAPACITY: 60L

INTERIOR FEATURES

FABRIC SEATS+ POWER ADJUSTABLE DRIVER SEAT

STEERING WHEEL WITH AUDIO, TELEPHONE, AND VOICE RECOGNITION

TELESCOPIC STEERING WITH MANUAL ADJUSTING

AUTO A/C + REAR AC DUCT

FRONT PASSENGER DOOR LOCK SWITCH

7 INCH MULTI INFORMATION DISPLAY

60:40 REAR SPLIT SEATS WITH (ARM REST & CUPHOLDERS)

8 INCH TOUCH SCREEN AUDIO SYSTEM WITH BT

APPLE CARPLAY SYSTEM

USB PORT (3 FRONT, 2 REAR)

6 SPEAKERS

EXTERIOR FEATURES

ALLOY WHEEL 16-INCH

LED HEADLAMP

LED REAR LAMPS (LED & HALOGEN COMBINED)

LED DAYTIME RUNNING LIGHTS "DRL"

FRONT FOG LAMPS (LED)

POWER SIDE VIEW MIRRORS, BODY COLORED, WITH TURNING SIGNAL LIGHT AND AUTO RETRACTABLE MODEL CHROME EMBLEM (E)



SAFETY & CONVENIENCE FEATURES

- AIR-BAG (DRIVER, FRONT PASSENGER, SIDE & CURTAIN)**
- SMART ENTRY SYSTEM WITH ENGINE START/STOP (PUSH BUTTON)**
- REAR VIEW CAMERA**
- FRONT & REAR PARKING SENSORS**
- CRUISE CONTROL**
- ELECTRIC PARKING BRAKE (EPB) + BRAKE HOLD FUNCTION**
- TRUNK LINER**
- PREMIUM HORN**
- FLOOR MATS (CARPET)**
- SAFETY REGULATION KIT**
- FUEL STICKER**



Contact Us

Address

Block 3, Showroom no.25, Al Awir, Ras Al khor
Auto Market, Dubai, UAE

Land Line

+971 43332623

Email

info@saharamotorsuae.com

